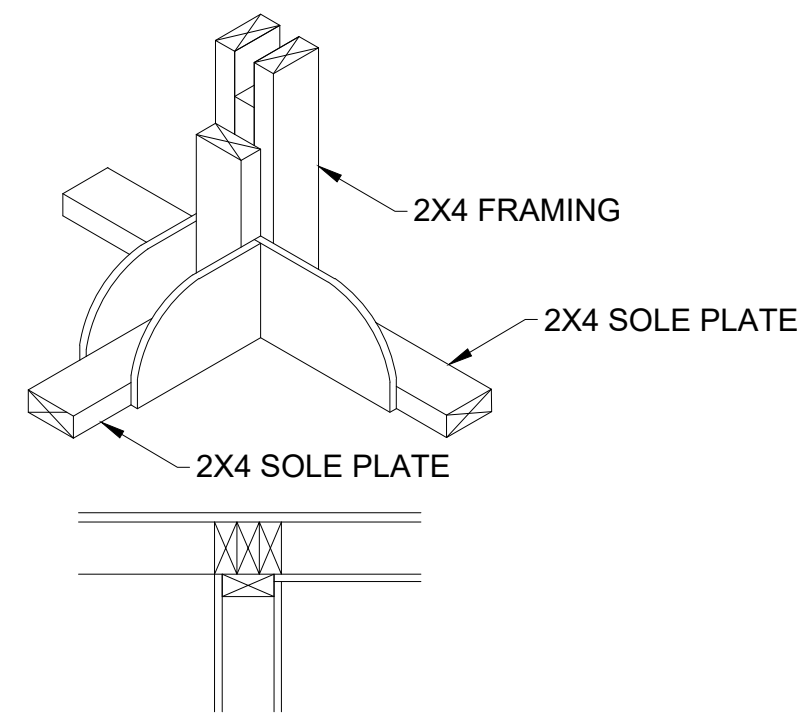
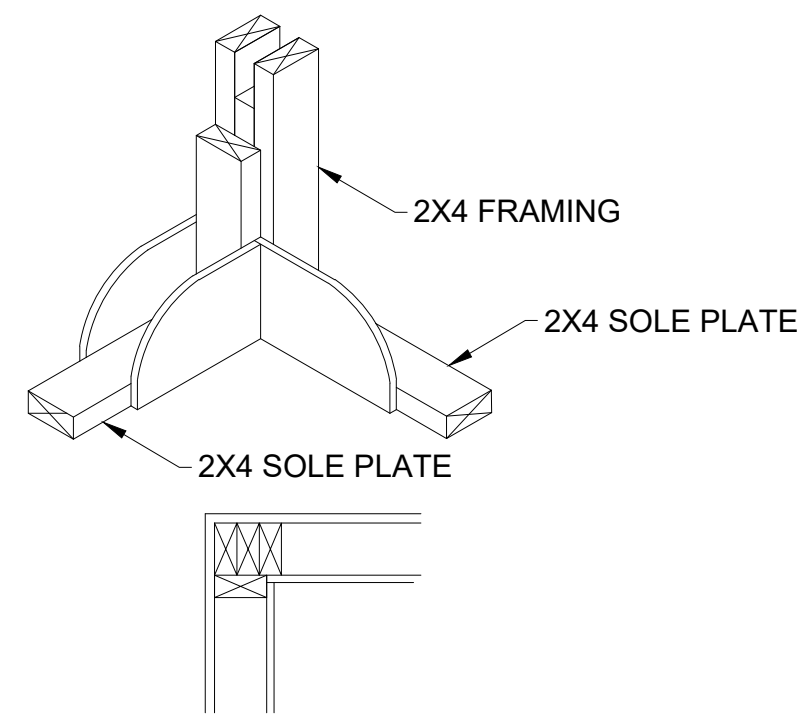


ALL CONSTRUCTION SHALL COMPLY WITH THE REQUIREMENTS OF THE INTERNATIONAL BUILDING CODE, 2012 EDITION

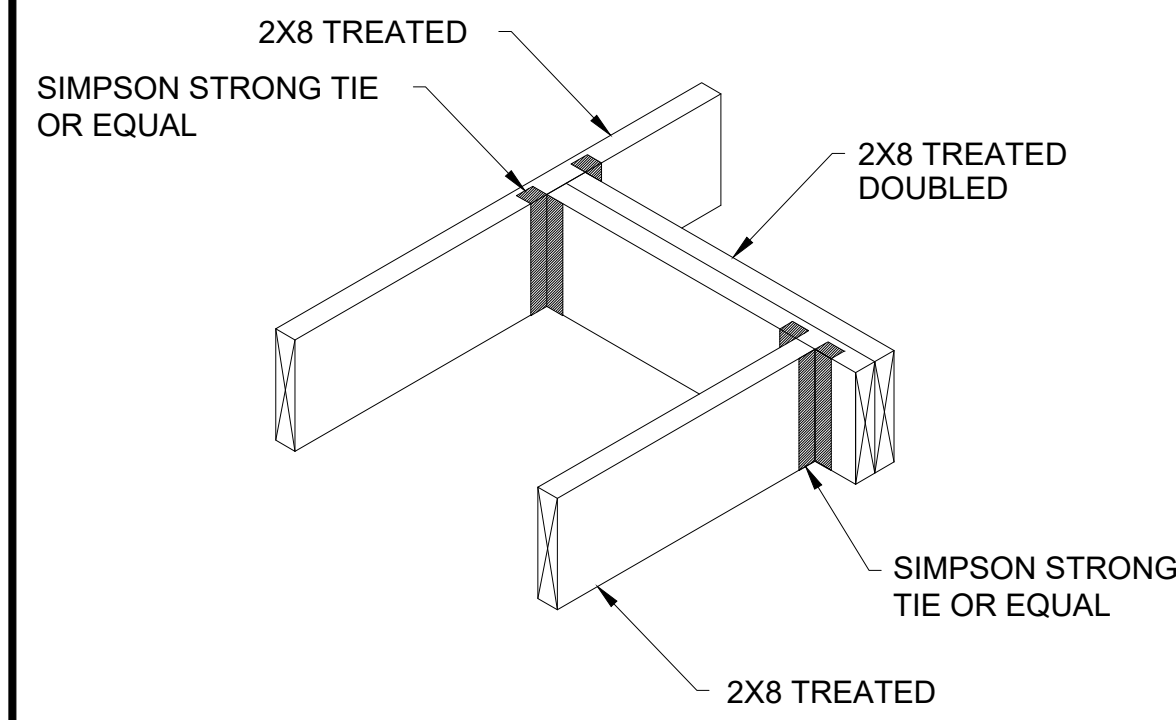
FRAMING DETAILS



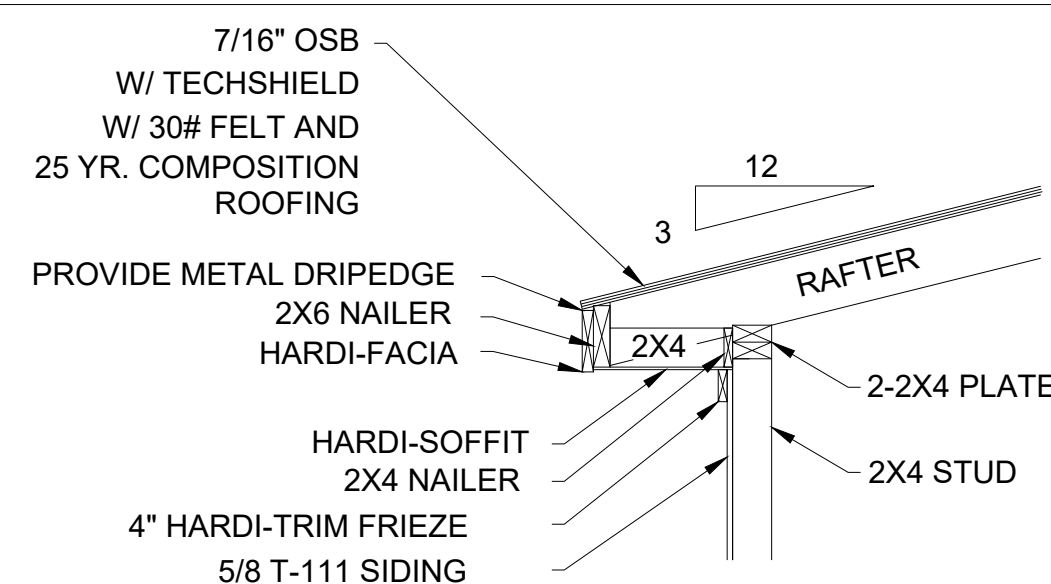
DETAIL 4
(INTERIOR CORNER FRAMING DETAIL)



DETAIL 5
(EXTERIOR CORNER FRAMING DETAIL)

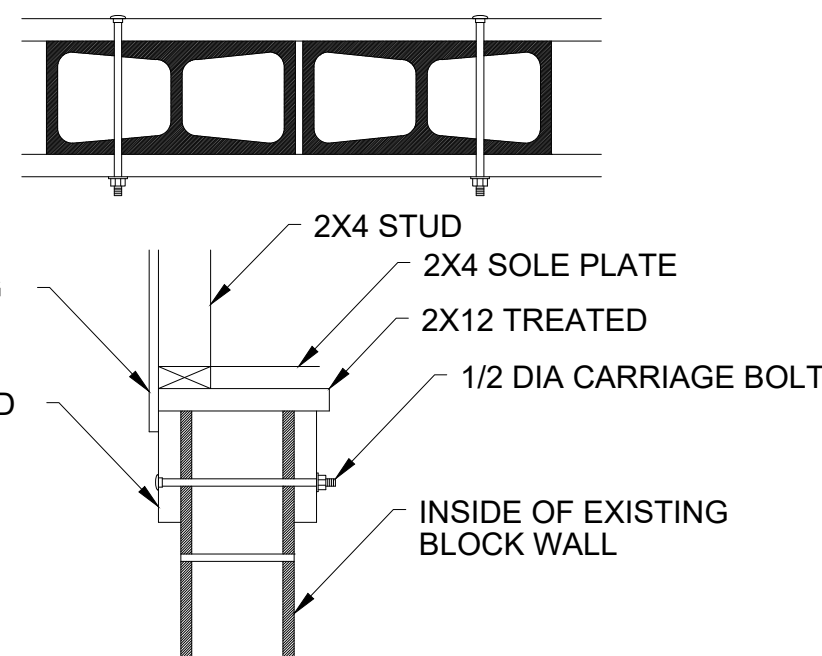


DETAIL 6
(FLOOR JOIST DETAIL)

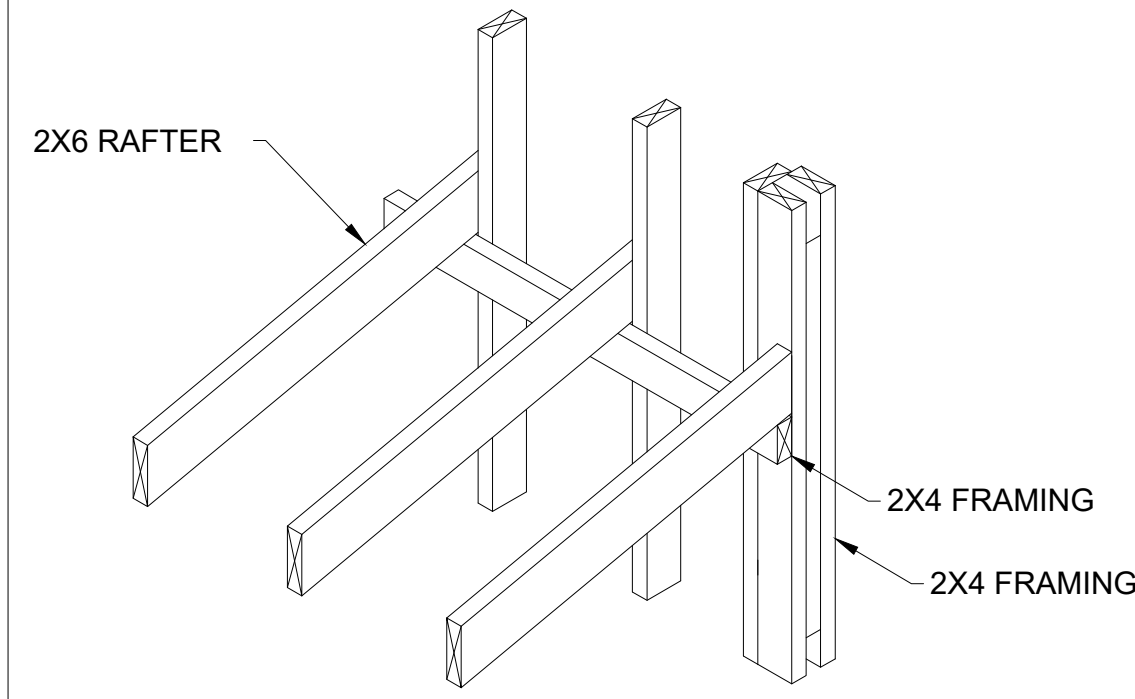


NOTE:
ADJUST AS REQUIRED FOR CONVENTIONAL FRAMING.

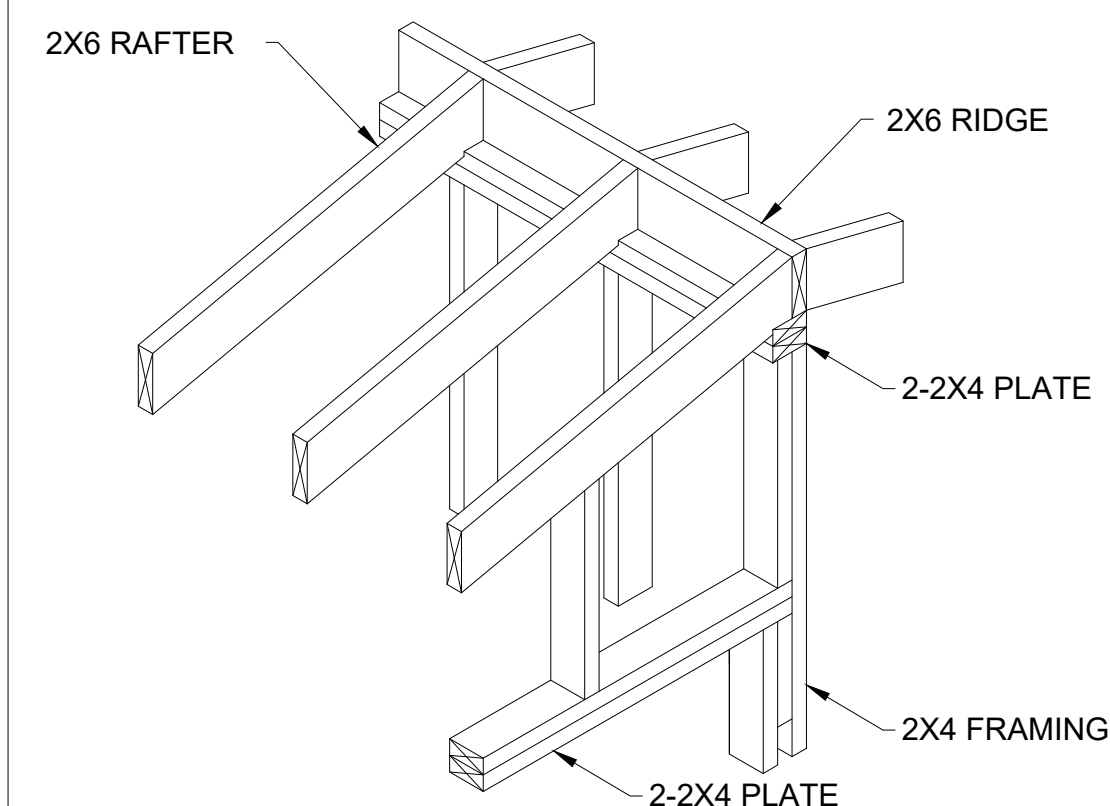
DETAIL 7
(SOFFIT DETAIL)



DETAIL 1
(CONNECTION TO EXISTING WALL)



DETAIL 2
(ROOF TO WALL DETAIL)



DETAIL 3
(ROOF OVER HANGE DETAIL)

GENERAL FRAMING NOTES

1. ALL RAFTERS TO BE 2"x6" AT 16" O.C. UNLESS OTHERWISE NOTED ON PLAN.
2. DOUBLE FLOOR JOISTS BELOW ALL PARTITIONS PARALLEL TO JOISTS SPAN.
3. PROVIDE 2"x6" RAFTER TIES AT ALL PLATES WHERE JOISTS RUN PERPENDICULAR TO RAFTERS.
4. PROVIDE 2-2"x6" STRONGBACK AT SPANS OVER 10'-0"
5. ALL STRUCTURAL FRAMING TO BE NO. 2 MATERIAL W/ 19% M.C. (MAX) AT TIME OF INSULATION

MATERIALS OF CONSTRUCTION

FRAMING

- 2X12 NO.2 PRESSURE TREATED
- 2X8 NO.2 PRESSURE TREATED
- 4X6 PRESSURE TREATED POST
- 2X6 NO.2 YELLOW PINE
- 2X4 NO.2 YELLOW PINE
- 2X4 NO.2 STUDS
- 3/4 CD PLYWOOD
- SIMPSON STRONG TIE JOIST HANGER OR EQUAL

EXTERIOR

- 7/16 OSB BOARD W/ TECHSHIELD
- 5/8 T111 SIDING 4" OC TREATED
- 30# FELT
- 25 YEAR COMPOSITION SHINGLES
- GALVANIZED ROOF FLASHING
- 6" HARDIE FACIA BOARD
- 4" HARDIE FACIA BOARD
- 12" HARDIE SOFFIT BOARD

WINDOWS/DOORS

- SECTIONAL GARAGE DOOR
- INTERIOR HOLLOW CORE DOOR
- SINGLE HUNG WINDOW

ELECTRICAL

- 125AMP LOAD CENTER
- 12/2 COPPER WIRING
- DUPLEX OUTLET
- GROUND FAULT INTERRUPTER
- SWITCH - SINGLE
- SWITCH - 3WAY
- SWITCHED RECEPTICLE
- PORCELAIN CEILING FIXTURE
- TWO BULB T8 (48") FLOURESCENT
- CARLON PVC SWITCH AND OUTLET BOX OR EQUAL
- CARLON PVC CEILING BOX
- TWO BULB T8 (48") FLOURESCENT

SPAN TABLE

CEILING JOISTS MAX. SPAN LIMITED ATTIC STORAGE

- 2"x6" AT 16" O.C. 13'-6"
- 2"x8" AT 16" O.C. 17'-5"
- 2"x10" AT 16" O.C. 20'-9"
- DO NOT EXCEED GIVEN DIM.

FLOOR JOIST MAX. SPAN 40 PSF LIVE LOAD

- 2"x12" AT 12" O.C. 21'-9"
- 2"x12" AT 16" O.C. 18'-10"
- 2"x12" AT 24" O.C. 15'-4"
- DO NOT EXCEED GIVEN DIM.

RAFTER MAX. SPAN SLOPES OVER 3 / 12

- 2"x6" AT 16" O.C. 15'-2"
- 2"x8" AT 24" O.C. 12'-5"
- 2"x8" AT 16" O.C. 19'-8"
- 20 PSF LIVE LD. - 7 PSF DEAD LD.

HEADER SCHEDULE BEAM MAX SPAN

- 2-2"x4" ON EDGE 3'-6"
- 2-2"x6" ON EDGE 4'-6"
- 2-2"x8" ON EDGE 6'-0"
- 2-2"x10" ON EDGE 7'-6"

NAIL SCHEDULE

CONNECTION

1. JOIST OR SILL OR GIRDER, TOENAIL 3-8d
2. BRIDGING TO JOIST, TOENAIL EACH END 2-8d
3. 1"x6" SUB FLOOR TO EACH JOIST, FACE NAIL 2-8d
4. WIDER THAN 1"x6" SUB FLOOR OR LESS TO EACH JOIST, FACE NAIL 3-8d
5. 2" SUB FLOOR TO JOIST OR GIRDER, BLIND AND FACE NAIL 2-16d
6. SOLE PLATE TO JOIST OR BLOCKING, FACE NAIL 16d AT 16" O.C.
7. TOP PLATE TO STUD, END NAIL 2-16d
8. STUD TO SOLE PLATE 4-8, TOENAIL 2-16d, END NAIL 16d AT 24" O.C.
9. DOUBLE STUDS, FACE NAIL 16d AT 16" O.C.
10. DOUBLE TOP PLATE, FACE NAIL 2-16d
11. TOP PLATES, LAPS AND INTERSECTIONS, FACE NAIL 16d AT 16" O.C. ALONG EACH EDGE
12. CONTINUOUS HEADER, TWO PIECES 3-8d

NAILING

13. CEILING JOISTS TO PLATE, TOENAIL 3-8d
14. CONTINUOUS HEADER, TO STUD, TOENAIL 4-8d
15. CEILING JOISTS, LAPS OVER PARTITIONS FACE NAIL 3-16d
16. CEILING JOISTS TO PARALLEL RAFTERS, FACE NAIL 3-16d
17. RAFTER TO PLATE, TOENAIL 3-8d
18. 1" BRACE TO EACH STUD AND PLATE, FACE NAIL 2-8d
19. 1"x8" SHEATHING OR LESS TO EACH BEARING, FACE NAIL 2-8d
20. WIDER THAN 1"x8" SHEATHING OR LESS TO EACH BEARING, FACE NAIL 3-8d
21. BUILT-UP CORNER STUDS 16d AT 24" O.C.
22. BUILT-UP GIRDERS AND BEAMS 20d AT 32" O.C. AT TOP AND BOTTOM STAGGERED 2-20d AT ENDS AND AT EACH SPLICE 2-16d AT EACH BEARING
23. 2" PLANKS 6d
24. PLYWOOD AND PARTICLE BOARD SUB FLOOR, ROOF AND WALL SHEATHING (TO FRAMING)
 - 1/2" AND LESS 8d OR 6d
 - 19/32"-3/4" 8d
 - 7/8"-1" 10d OR 8d
 - 1 1/8"-1 1/4" 10d OR 8d
- COMBINATION SUBFLOOR-UNDERLAYMENT (TO FRAMING)
 - 3/4" AND LESS 6d
 - 1/8"-1" 8d
 - 1 1/8"-1 1/4" 10d OR 8d
25. PANEL SIDING (TO FRAMING)
 - 1/2" OR LESS 6d
 - 3/8" 8d
 - No. 11 GA. 6d
 - No. 16 GA. 6d
 - No. 11 GA. 8d
 - No. 16 GA. 8d
26. FIBERBOARD SHEATHING
 - 1/2" 8d
 - 25/32" No. 16 GA.

1. COMMON OR BOX NAILS MAY BE USED EXCEPT WHERE OTHERWISE STATED
2. COMMON OR DEFORMED SHANK
3. COMMON
4. DEFORMED SHANK
5. NAILS SPACED AT 6" ON CENTER AT EDGES. 12 INCHES AT INTERMEDIATE SUPPORTS EXCEPT 6 INCHES AT ALL SUPPORTS WHERE SPANS ARE 48 INCHES OR MORE. FOR NAILING OF PLYWOOD AND PARTICLEBOARD DIAPHRAGMS AND SHEAR WALLS, REFER TO 2313 (C). NAILS FOR WALL SHEATHING MAY BE COMMON, BOX, OR CASING.
6. CORROSION-RESISTANT SIDING OR CASING NAILS CONFORMING TO THE REQUIREMENTS OR SECTION 2316 (J)
7. FASTENERS SPACED 3 INCHES ON CENTER AT EXTERIOR EDGES AND 6 INCHES ON CENTER AT INTERMEDIATE SUPPORTS.
8. CORROSION-RESISTANT ROOFING NAILS WITH 7/16-INCH DIAMETER HEAD AND 1 1/2-INCH LENGTH FOR 1/2-INCH SHEATHING AND 1 3/4-INCH LENGTH FOR 25/32-INCH SHEATHING CONFORMING TO THE REQUIREMENTS OF SECTION 2316 (J)
9. CORROSION-RESISTANT STAPLES WITH NOMINAL 7/16-INCH CROWN AND 1 1/8-INCH LENGTH FOR 1/2-INCH SHEATHING AND 1 1/2-INCH LENGTH FOR 25/32-INCH SHEATHING CONFORMING TO THE REQUIREMENTS OF SECTION 2316 (J)

Needville Youth Fair
Administration Building Improvement

Nesvadba Design Services

P.O. Box 353, Texas, 77461
Phone: 281.543.4660
E-mail: ags96@consolidated.net

Sheet No.

S4
of 12

DETAILS

SCALE: N.T.S.